



Determine which letter best represents the weight.

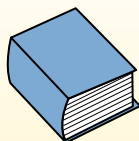
**Gram (g)**

A gram is about the weight of a paperclip.



**Kilogram (kg)**

A kilogram is about the weight of a thick book.



**Remember:**

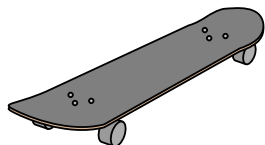
Kilo means 1,000. So a kilogram is 1,000 grams.

1 Kilogram is also about the same weight as 2 pounds.

**Answers**

1. \_\_\_\_\_
2. \_\_\_\_\_
3. \_\_\_\_\_
4. \_\_\_\_\_
5. \_\_\_\_\_
6. \_\_\_\_\_
7. \_\_\_\_\_
8. \_\_\_\_\_
9. \_\_\_\_\_

1)



Skateboard

- A. 15 kilograms
- B. 2 kilograms
- C. 20 grams
- D. 200 grams

2)



Big Screen TV

- A. 20 kilograms
- B. 1000 kilograms
- C. 100 grams
- D. 20 grams

3)



2 Liter of Soda

- A. 100 grams
- B. 3 grams
- C. 2 kilograms
- D. 50 grams

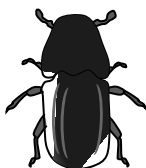
4)



Pen

- A. 5 kilograms
- B. 5000 grams
- C. 500 grams
- D. 5 grams

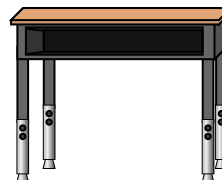
5)



Beetle

- A. 1 gram
- B. 500 grams
- C. 5000 grams
- D. 2 kilograms

6)



Desk

- A. 300 grams
- B. 15 kilograms
- C. 300 kilograms
- D. 15 grams

7)



Broom

- A. 200 kilograms
- B. 10 grams
- C. 10 kilograms
- D. 500 grams

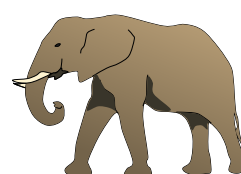
8)



Shovel

- A. 30 kilograms
- B. 5 kilograms
- C. 1 gram
- D. 10 grams

9)



Elephant

- A. 30 kilograms
- B. 90 grams
- C. 5000 grams
- D. 5000 kilograms



Determine which letter best represents the weight.

**Gram (g)**

A gram is about the weight of a paperclip.



**Kilogram (kg)**

A kilogram is about the weight of a thick book.



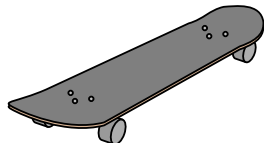
**Remember:**

Kilo means 1,000. So a kilogram is 1,000 grams.

1 Kilogram is also about the same weight as 2 pounds.

**Answers**

1)



Skateboard

- A. 15 kilograms
- B. 2 kilograms
- C. 20 grams
- D. 200 grams

2)



Big Screen TV

- A. 20 kilograms
- B. 1000 kilograms
- C. 100 grams
- D. 20 grams

3)



2 Liter of Soda

- A. 100 grams
- B. 3 grams
- C. 2 kilograms
- D. 50 grams

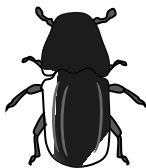
4)



Pen

- A. 5 kilograms
- B. 5000 grams
- C. 500 grams
- D. 5 grams

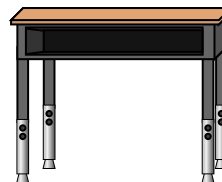
5)



Beetle

- A. 1 gram
- B. 500 grams
- C. 5000 grams
- D. 2 kilograms

6)



Desk

- A. 300 grams
- B. 15 kilograms
- C. 300 kilograms
- D. 15 grams

7)



Broom

- A. 200 kilograms
- B. 10 grams
- C. 10 kilograms
- D. 500 grams

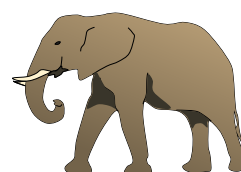
8)



Shovel

- A. 30 kilograms
- B. 5 kilograms
- C. 1 gram
- D. 10 grams

9)



Elephant

- A. 30 kilograms
- B. 90 grams
- C. 5000 grams
- D. 5000 kilograms

- 1. **B**
- 2. **A**
- 3. **C**
- 4. **D**
- 5. **A**
- 6. **B**
- 7. **D**
- 8. **B**
- 9. **D**